



UNE-EN 61537
UNE-EN 50085



UNE-EN 61537
UNE-EN 50085
UNE 23727
UL94



UNE-EN 60695



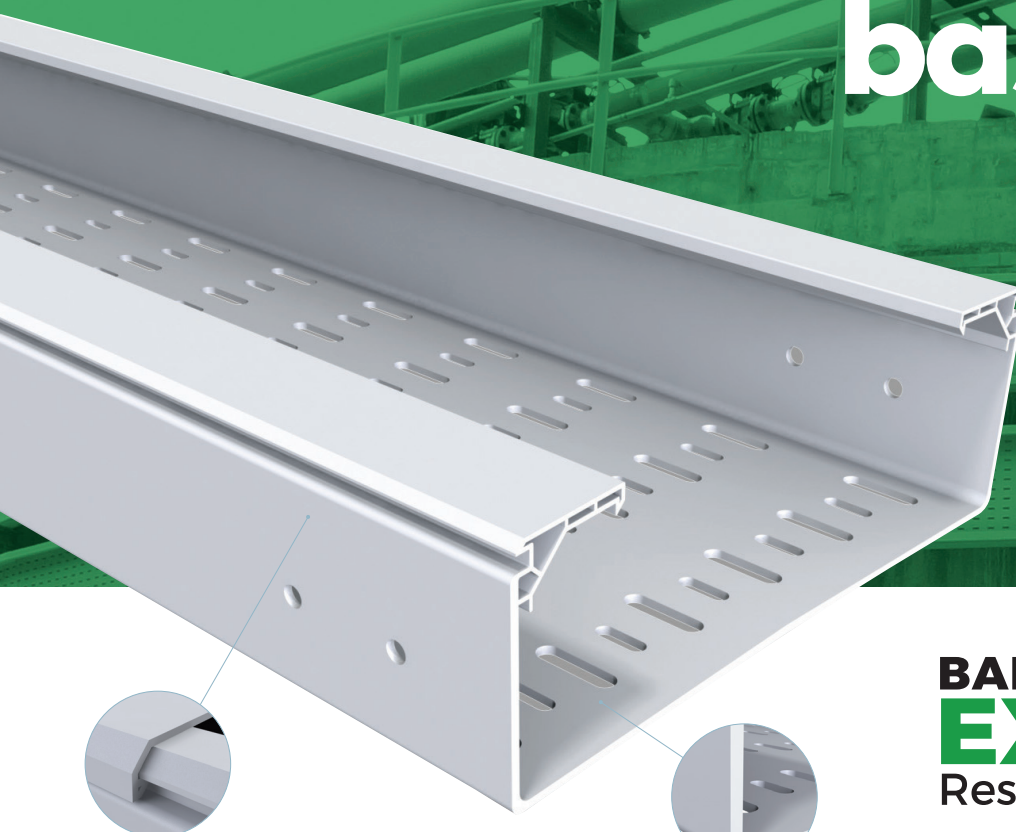
UNE-EN 61537



UNE-EN 50085

basorplast

BPE



BANDEJAS DE PVC PARA EXTERIORES

Resistente a los UV

MATERIAL PVC M1 UV

Sistema **sólido-macizo** fabricado en material PVC M1

Doble **troquelado** mejorando el embridado



PVC para instalaciones en el exterior, resistente a los rayos UV.



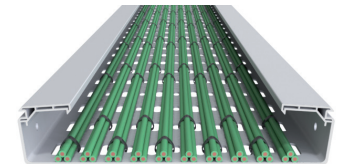
Alta seguridad, material aislante, no necesita toma de tierra.



Excelente resistencia contra la corrosión en ambientes húmedos y químicamente agresivos.



Accesorios diseñados para una eficiente y rápida instalación en todo tipo de obras.



IEC 50102

IEC 60529



Mod. 60x100 10J
UNE-EN 61537
UNE-EN 50085



ISO/TR 10358
DIN 8061

Tratamiento de aguas



Energías renovables



Infraestructuras costeras



Minería



Construcción de maquinaria



Industria papelera



Industria química



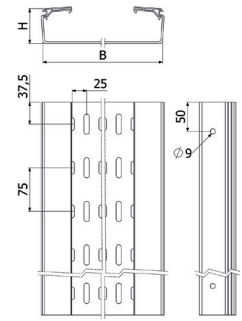
Petroquímicas



BANDEJA BPE-P / Alto 60



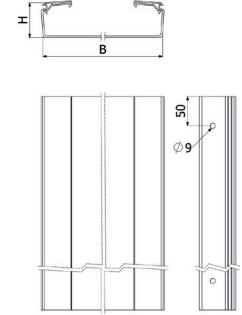
3m (10ft)	↓		↔		PVC M1 UV	KG/M
	mm	inch	mm	inch		
BPE 60X100	60	2 3/8"	100	4"	2/10070	0.73
BPE 60X150	60	2 3/8"	150	6"	2/10071	0.98
BPE 60X200	60	2 3/8"	200	8"	2/10072	1.45
BPE 60X300	60	2 3/8"	300	12"	2/10073	2.34



BANDEJA BPE-C / Alto 60



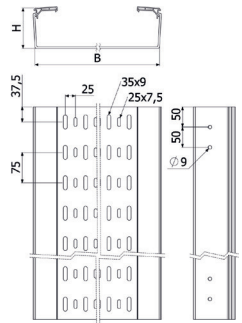
3m (10ft)	↓		↔		PVC M1 UV	KG/M
	mm	inch	mm	inch		
BPE-C 60X100	60	2 3/8"	100	4"	2/10062	0.77
BPE-C 60X150	60	2 3/8"	150	6"	2/10063	1.03
BPE-C 60X200	60	2 3/8"	200	8"	2/10064	1.54
BPE-C 60X300	60	2 3/8"	300	12"	2/10065	2.48



BANDEJA BPE-P / Alto 100



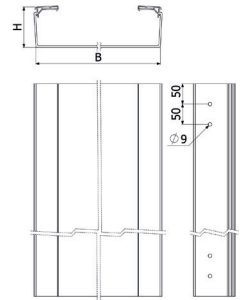
3m (10ft)	↓		↔		PVC M1 UV	KG/M
	mm	inch	mm	inch		
BPE 100X200	100	4"	200	8"	2/10074	2.25
BPE 100X300	100	4"	300	12"	2/10075	3.63
BPE 100X400	100	4"	400	16"	2/10076	4.30
BPE 100X600	100	4"	600	24"	2/10077	6.40



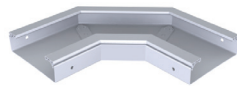
BANDEJA BPE-C / Alto 100



3m (10ft)	↓		↔		PVC M1 UV	KG/M
	mm	inch	mm	inch		
BPE-C 100X200	100	4"	200	8"	2/10066	2.38
BPE-C 100X300	100	4"	300	12"	2/10067	3.45
BPE-C 100X400	100	4"	400	16"	2/10068	4.54
BPE-C 100X600	100	4"	600	24"	2/10069	6.72



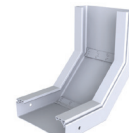
TBPE



CPBPE



TCPBPE



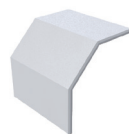
CCBPE



TCCBPE



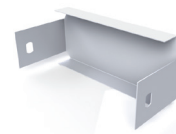
CXBPE



TCXBPE



PDBPE



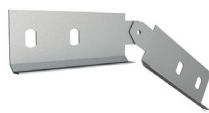
TFBPE



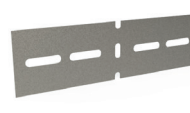
PSBPE



JUBPE



JUBPE-A



JUBPE-B



CTBP